

SYNERGY5 PROFILE

THE TOUCH OF LIGHT



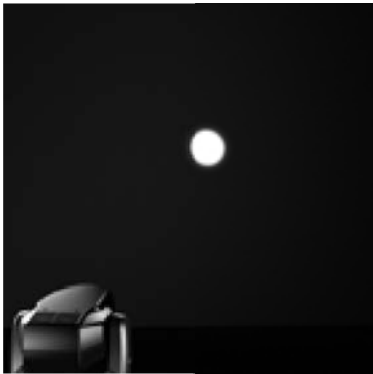
SYNERGY5 PROFILE



HIGH POWER COMPACT LED
MOVING HEAD WITH BUILT-IN
ROTATING FRAMING SYSTEM

POWERFUL OUTPUT WIDE ZOOM RANGE

A custom-designed 4.6° to 43° zoom system (over 1:9 ratio) with auto focus is coupled with a 420 W pure white LED source (7000 K 16,500 Lumens output). This carefully studied match delivers a massive 49,900 Lux luminosity (4.6° @ 5 m) with an evenly diffused and flat beam.



49,900 Lux - 4.6° / 5m - Ø 40cm



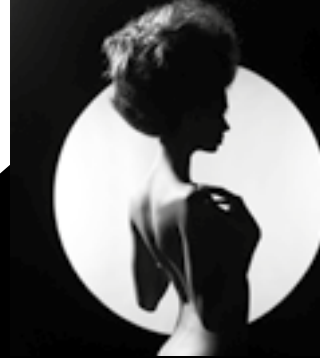
1,483 Lux - 43° / 5m - Ø 394cm

Gobos are perfectly focused at any zoom angle and at any distance.

The linear Frost filter lets you change from hard-edge to soft-edge projections.



SELECTABLE CRI >90 OR >75



SYNERGY 5 PROFILE offers two CRI options (DMX-selectable):

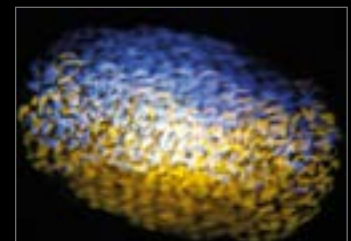
CRI >90 for life-like colors and beautifully natural skin tones in theatre and TV shootings;

CRI >75 for a terrific luminosity in large concerts and events.

DYNAMOVE FX ENGINE

Dynamove is a revolutionary FX engine which delivers a range of stunning 3D-like dynamic animation effects.

Powerful macros put at your fingertips a variety of ready-to-use multi-layer lighting effects.



VIRTUAL ANIMATION WHEEL



WATER



FIRE



CLOUD



FLAME

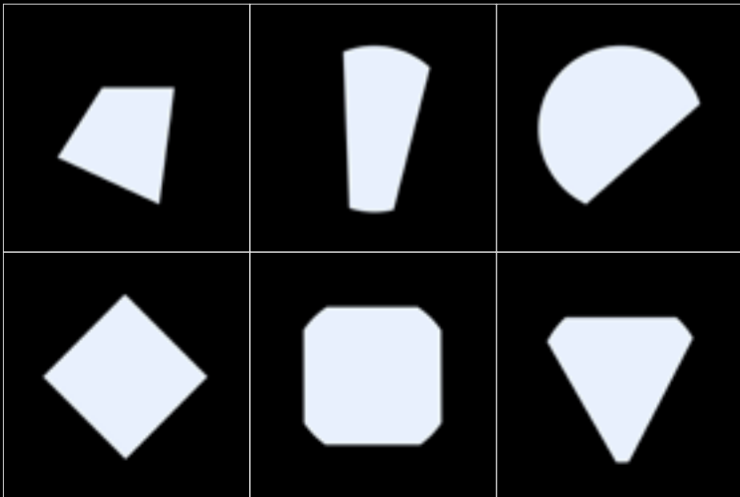
SYNERGY 5 PROFILE introduces the ground-breaking Virtual Animation Wheel; this new effect fully replaces the classic animation wheel, and lets you create a range of outstanding dynamic backgrounds.

ROTATING FRAMING SYSTEM

The framing system of SYNERGY 5 PROFILE features 4 blades operating on 4 discrete plans.

This setup allows each blade to fully enter / exit the visual field with a real 'curtain' effect, and rotate 60° (+/- 30°). Also the whole framing system can rotate 90° (+/- 45°).

This way you can generate any 3 or 4 sides regular or irregular parallelograms, and change smoothly or super-fast to each other. Framing system indexing guarantees a precise playback of any cue.



ADVANCED COLOR MIXING

The right color for your lighting design is always at hand. Just choose it in the built-in virtual color palette of gel filters emulation.

19 FIRE	113 MAGENTA	139 PRIMARY GREEN
20 MEDIUM AMBER	117 STEEL BLUE	147 APRICOT
25 SUNSET RED	118 LIGHT BLUE	151 GOLD TINT
68 SKY BLUE	122 FERN GREEN	154 PALE ROSE
101 YELLOW	126 MAUVE	156 CHOCOLATE
104 DEEP AMBER	132 MEDIUM BLUE	181 CONGO BLUE
105 ORANGE	136 PALE LAVENDER	200 DOUBLE CT BLUE
106 PRIMARY RED	137 LAVENDER	201 FULL CT BLUE
111 DARK PINK	138 PALE GREEN	204 FULL CT ORANGE
		341 PLUM

TOTAL CONTROL & NETWORKING

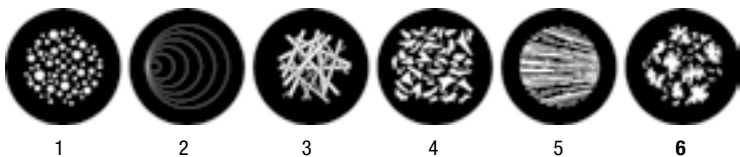
Art-Net 4 and sACN are on board. Supporting the latest versions of these protocols means to be geared for the large scale installations of the future and for top-end Ethernet networks.

PHOTOMETRIC DATA

BEAM ANGLE 4.6°	mt 5	mt 10	mt 15	mt 20	mt 25
	ft 16.40	ft 32.81	ft 49.21	ft 65.62	ft 82.02
Lux Center [lx]	49940	12485	5549	3121	1998
Foot Candles [fc]	4641	1160	516	290	186
Diameter [cm]	40	80	120	161	201
Diameter [ft]	1.32	2.64	3.95	5.27	6.59

BEAM ANGLE 43°	mt 3	mt 6	mt 9	mt 12	mt 15
	ft 9.84	ft 19.68	ft 29.53	ft 39.37	ft 49.21
Lux Center [lx]	4119	1030	458	257	165
Foot Candles [fc]	383	96	43	24	15
Diameter [cm]	236	473	709	945	1182
Diameter [ft]	7.75	16.51	23.26	31.02	38.77

ROTATING GOBO WHEEL



COLOR WHEEL



OUTPUT

420 W pure white LED source
(7000 K 16,500 Lumens output)
Double CRI (DMX-selectable):
CRI >90 or CRI >75
Average LED life: 50,000 hours
(70% lumen output)

Updatable internal operating system
Li-Fe backup battery for controlling
the display settings even when
the unit is not powered

DMX

44 DMX channels

OPTICAL GROUP

49,900 Lux (4.6°@ 5 m)
4.6° - 43° linear zoom with autofocus
Linear frost filter
Electronic dimmer / shutter / strobe
(0.3 to 33.3 flash/sec)

PAN & TILT

Pan: 540°: 2.7 sec. / Tilt: 240°: 1.6 sec.
Tri-phase stepper motor technology;
16-bit resolution
Selectable speed ranges
Pan / Tilt lock

COLOR GENERATION

Linear CMY
Linear CTO (3000 K – 7000 K)
Gel filter emulation
6-color wheel
Two-color generation

POWER SUPPLY

Full-range 100-240 Vac 50 / 60 Hz
Power consumption: 600 W max

CONNECTIONS

DMX: XLR 3-pole and 5-pole
In / Out panel connectors
Power supply: powerCON TRUE1
In / Out panel connectors
Art-Net / sACN: etherCON RJ45 connector

DYNAMIC EFFECTS

Dynamove FX Engine
Virtual Animation Wheel
Customizable rotating 6-gobo wheel
Circular 24-facet rotating prism
Linear 6-facet rotating prism

INTERNAL SAFETY DEVICES

Overtoltage and overtemperature circuits protection

ROTATING FRAMING SYSTEM

4-blade rotating framing system
Real 'curtain' effect for each blade
60° rotation for each blade (+/- 30°)
90° full system rotation (+/- 45°)

PHYSICAL

IP20
Weight: 32 Kg (70.4 lbs)
Finishing: Black

INTERFACE / CONTROL

LCD graphic display + 4 soft-keys; Auto-flip
Art-Net 4, sACN, RDM/DMX protocols

OPERATING AMBIENT TEMPERATURE

-10° / 40°

DMX CHANNELS

01 PAN msb	16 GEL FILTERS EMULATION	31 DYNAMOVE MACROS
02 PAN lsb	17 GOBO	32 BLADES EFFECTS SPEED /
03 TILT msb	18 GOBO ROTATION/INDEX msb	DYNAMOVE MACROS SPEED
04 TILT lsb	19 GOBO ROTATION/INDEX lsb	33 PRISM MODE
05 SPEED MOVEMENT	20 GOBO SHAKE	34 PRISM 1 POSITION
06 RESERVED	21 BLADES SYSTEM ROTATION	35 PRISM 1 ROTATION/INDEX
07 DIMMER msb	22 BLADE 1 INSERTION	36 PRISM 2 POSITION
08 DIMMER lsb	23 BLADE 1 ROTATION	37 PRISM 2 ROTATION/INDEX
09 SHUTTER	24 BLADE 2 INSERTION	38 SOFTEN FILTER
10 COLOUR WHEEL	25 BLADE 2 ROTATION	39 FROST
11 COLOUR MODE	26 BLADE 3 INSERTION	40 FOCUS msb
12 CYAN	27 BLADE 3 ROTATION	41 FOCUS lsb
13 MAGENTA	28 BLADE 4 INSERTION	42 ZOOM
14 YELLOW	29 BLADE 4 ROTATION	43 FIXTURE CONTROL
15 CTO	30 BLADE EFFECTS	44 RESET



D.T.S. Illuminazione srl
via Fagnano Selve 12/14
47843 Misano Adriatico (RN)
ITALY

Phone +39 0541 611131
Fax +39 0541 611111
Email info@dts-lighting.it

dts-lighting.it

