



Features:

- Zinc Diecast shell.
- The P size housing is the original wide flange front mounting XLR connector. PN is the original narrow, front mounting male connector.
- Solder Bucket connections.
- Vertical PCB mounting.
- Precision Machined or Stamped contacts (3 pin only).
- Leading first mate last break socket contact.
- Positive latch lock system.

Options: Stamped contacts (3 contact only), Gold plated contacts, Vertical PCB contacts, Black Finish, Non-Latching (Female only), Bulk Pack.

Part Number Breakdown: Page 24

Specifications: Page 25

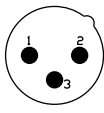
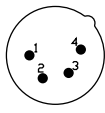
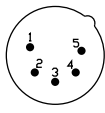
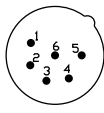
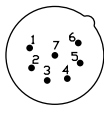
PCB Footprints: Page 26

Panel Cutouts: Page 26



PRODUCT - FIGURE	DRAWING	Dimensions in mm (inches)	DESCRIPTION	VARIATIONS	PART NUMBER
	<p>27.0 [1.063"] 36.8 [1.449"] 22.2 [.874"] 2.4 [.094"] 25.5 [1.004"] 32.1 [1.265"] 36.5 [1.437"] SOLDER CONTACTS PCB CONTACTS</p>	XLR 3 pole male, Narrow flange, Machined contacts, Nickel Finish	Standard	AC3MMPNZ	
			Gold Plated Contacts	AC3MMPNZ-AU	
	<p>27.0 [1.063"] 36.8 [1.449"] 22.2 [.874"] 2.4 [.094"] 25.5 [1.004"] 32.1 [1.265"] 36.5 [1.437"] SOLDER CONTACTS PCB CONTACTS</p>	XLR 3 pole male, Narrow flange, Machined contacts, Black Finish	Vertical PCB	AC3MMPNZV	
			Bulk Pack	AC3MMPNZ BULK	
	<p>27.0 [1.063"] 36.8 [1.449"] 22.2 [.874"] 2.4 [.094"] 25.5 [1.004"] 32.1 [1.265"] 36.5 [1.437"] SOLDER CONTACTS PCB CONTACTS</p>	XLR 3 pole male, Narrow flange, Stamped contacts, Nickel Finish	Standard	AC3MPNZ	
			Gold Plated Contacts	AC3MPNZ-AU	
	<p>27.0 [1.063"] 36.8 [1.449"] 22.2 [.874"] 2.4 [.094"] 25.5 [1.004"] 32.1 [1.265"] 36.5 [1.437"] SOLDER CONTACTS PCB CONTACTS</p>	XLR 3 pole male, Narrow flange, Stamped contacts, Black Finish	Vertical PCB	AC3MPNZV	
			Bulk Pack	AC3MPNZ BULK	
	<p>27.2 [1.070"] 26.4 [1.039"] 36.7 [1.445"] 16.7 [.656"] 2.4 [.094"] 25.0 [0.982"] 31.5 [1.238"] 36.0 [1.415"] SOLDER CONTACTS PCB CONTACTS</p>	XLR 3 pole male, Wide flange, Machined contacts, Nickel Finish	Standard	AC3MMP	
			Gold Plated Contacts	AC3MMP-AU	
	<p>27.2 [1.070"] 26.4 [1.039"] 36.7 [1.445"] 16.7 [.656"] 2.4 [.094"] 25.0 [0.982"] 31.5 [1.238"] 36.0 [1.415"] SOLDER CONTACTS PCB CONTACTS</p>	XLR 3 pole male, Wide flange, Machined contacts, Black Finish	Vertical PCB	AC3MMPV	
			Bulk Pack	AC3MMP BULK	
	<p>27.2 [1.070"] 26.4 [1.039"] 36.7 [1.445"] 16.7 [.656"] 2.4 [.094"] 25.0 [0.982"] 31.5 [1.238"] 36.0 [1.415"] SOLDER CONTACTS PCB CONTACTS</p>	XLR 3 pole male, Wide flange, Machined contacts, Black Finish	Standard	AC3MMPB	
			Gold Plated Contacts	AC3MMPB-AU	
	<p>27.2 [1.070"] 26.4 [1.039"] 36.7 [1.445"] 16.7 [.656"] 2.4 [.094"] 25.0 [0.982"] 31.5 [1.238"] 36.0 [1.415"] SOLDER CONTACTS PCB CONTACTS</p>	XLR 3 pole male, Wide flange, Machined contacts, Black Finish	Vertical PCB	AC3MMPVB	
			Bulk Pack	AC3MMPB BULK	

STANDARD DATA AC SERIES CHASSIS - METAL “Z”

		VALUE				
GENERAL CHARACTERISTICS	Number of contacts	3	4	5	6A	7
	Contact Arrangement (Front view of pin inserts)					
	Termination	Solder Bucket / Printed Circuit Board (PCB)				
	Max. Wire Gauge - Stranded wire: Solder Printed Circuit Board - PCB	14AWG N/A	16AWG N/A	18AWG N/A	18AWG N/A	20AWG N/A
Flammability rating of plastics	UL94V-0					
ELECTRICAL CHARACTERISTICS	Service Voltage RMS	133V ¹⁾				
	Test Voltage AC RMS	1400V				
	Current carrying capacity: Solder Printed Circuit Board (PCB)	15A 15A	10A 10A	7.5A 7.5A	7.5A 7.5A	5A 5A
	Typical Contact Resistance	≤ 3mΩ				
	Insulation Resistance	≥ 1000MΩ				
CLIMATIC CHARACTERISTICS	Protection Class	IP40				
	Operating Temperature	-25 °C to +75 °C				
MECHANICAL CHARACTERISTICS	Weight - Metal ²⁾	31g (0.068lb)	32g (0.070lb)	33g (0.072lb)	33g (0.072lb)	33g (0.072lb)
	Mechanical Operations	1000 mating cycles				
MATERIALS	Connector Shell	Diecast Zinc Alloy				
	Shell Finish	Satin Nickel or Black Polyester				
	Insulators	UL94V-0 PBT Resin or Modified PPE Resin				
	Male Contact					
	Stamped Solder and PCB-(Material/Plating)	Phosphor Bronze / Silver or Gold (optional)				
	Machined Solder-(Material/Plating)	Brass / Silver or Gold (optional)				
Female Contact	Stamped Solder and PCB-(Material/Plating)	Phosphor Bronze / Tin or Gold (optional)				
	Machined Solder-(Material/Plating)	Brass / Silver or Gold (optional)				

¹⁾ Not suitable for domestic applications above 50V

²⁾ Approximate weight only, does not include packaging. Please contact us for exact weight for shipping purposes.

AC SERIES CHASSIS METAL "Z"

PCB FOOTPRINTS STRAIGHT (V)

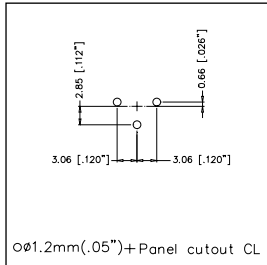
- CONNECTOR SIDE OF PCB

PANEL CUTOUT DIMENSIONS

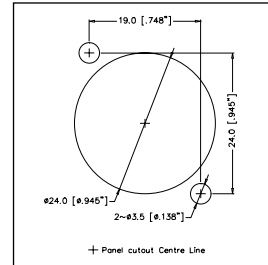
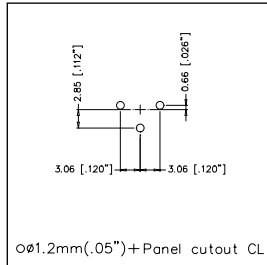
-FRONT VIEW



AC3F*ZV

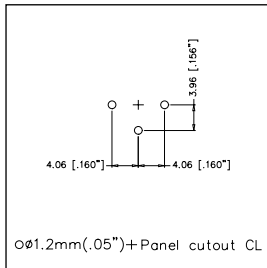


AC3M*ZV

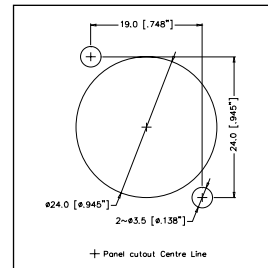
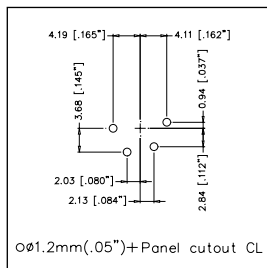


AC*FDZ

AC3MM*ZV

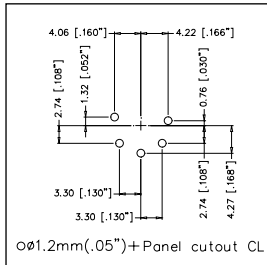


AC4M*ZV

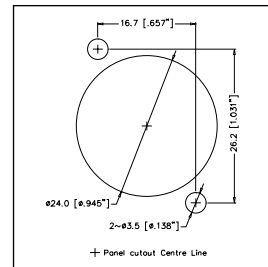
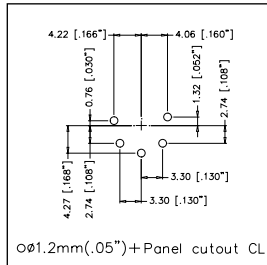


AC*MDZ

AC5F*ZV

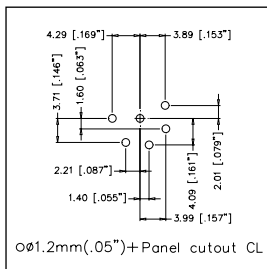


AC5M*ZV

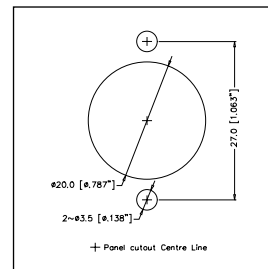
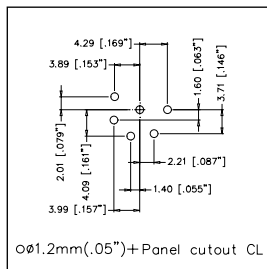


AC*FPZ
AC-PDN-31-XXX

AC6AF*ZV

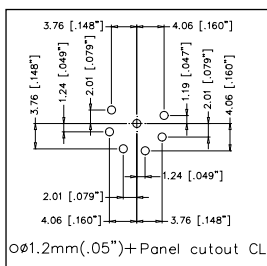


AC6AM*ZV

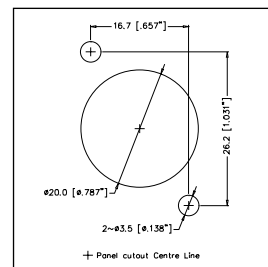
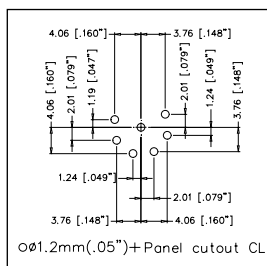


AC*MPNZ

AC7F*ZV



AC7M*ZV



AC*MP
AC-PDN-34-XXX