



CDPS-41SQ

4 by 1 HDMI Seamless Switcher



Operation Manual

DISCLAIMERS

The information in this manual has been carefully checked and is believed to be accurate. Cypress Technology assumes no responsibility for any infringements of patents or other rights of third parties which may result from its use.

Cypress Technology assumes no responsibility for any inaccuracies that may be contained in this document. Cypress also makes no commitment to update or to keep current the information contained in this document.

Cypress Technology reserves the right to make improvements to this document and/or product at any time and without notice.

COPYRIGHT NOTICE

No part of this document may be reproduced, transmitted, transcribed, stored in a retrieval system, or any of its part translated into any language or computer file, in any form or by any means—electronic, mechanical, magnetic, optical, chemical, manual, or otherwise—without express written permission and consent from Cypress Technology.

© Copyright 2011 by Cypress Technology.

All Rights Reserved.

Version 1.1 August 2011

TRADEMARK ACKNOWLEDGMENTS

All products or service names mentioned in this document may be trademarks of the companies with which they are associated.





SAFETY PRECAUTIONS

Please read all instructions before attempting to unpack, install or operate this equipment and before connecting the power supply.

Please keep the following in mind as you unpack and install this equipment:

- Always follow basic safety precautions to reduce the risk of fire, electrical shock and injury to persons.
- To prevent fire or shock hazard, do not expose the unit to rain, moisture or install this product near water.
- Never spill liquid of any kind on or into this product.
- Never push an object of any kind into this product through any openings or empty slots in the unit, as you may damage parts inside the unit.
- Do not attach the power supply cabling to building surfaces.
- Use only the supplied power supply unit (PSU). Do not use the PSU if it is damaged.
- Do not allow anything to rest on the power cabling or allow any weight to be placed upon it or any person to walk on it.
- To protect the unit from overheating, do not block any vents or openings in the unit housing that provide ventilation and allow for sufficient space for air to circulate around the unit.

REVISION HISTORY

| VERSION NO. | DATE (DD/MM/YY) | SUMMARY OF CHANGE |
|-------------|-----------------|---------------------------------|
| VR0 | 17/10/13 | Preliminary Release |
| VS0 | 23/05/13 | Updated Format/Diagrams |
| VR1 | 07/03/14 | Add Support Chart |
| VR2 | 20/06/14 | Update RS-232 & OSD, Add WebGUI |
| VR3 | 18/07/14 | Added RS-232 Commands |
| VS4 | 22/08/14 | Updated text |

CONTENTS

| | |
|--|-----------|
| 1. Introduction | 1 |
| 2. Applications | 1 |
| 3. Package Contents | 1 |
| 4. System Requirements | 1 |
| 5. Features | 2 |
| 6. Operation Controls and Functions | 3 |
| 6.1 Front Panel | 3 |
| 6.2 Rear Panel..... | 4 |
| 6.3 Remote Control..... | 5 |
| 6.4 OSD Menu | 6 |
| 6.5 RS-232 Protocols | 15 |
| 6.6 RS-232 and Telnet Commands | 15 |
| 6.7 Telnet Control | 21 |
| 6.8 Web GUI Control | 23 |
| 7. Connection Diagram | 26 |
| 8. Specifications | 27 |
| 8.1 Technical Specification | 27 |
| 8.2 Supported Resolution | 28 |
| 9. Acronyms | 29 |





1. INTRODUCTION

This 4 by 1 HDMI Seamless Switcher is an advanced HDMI switch with integrated Picture-in-Picture (PIP) technology that can be easily configured and controlled. It allows 4 different sources to be selected and arranged on a single display and supports video resolutions up to 1080p and audio up to 8CH/192kHz. Preset hot keys, IR remote control, OSD menu, RS-232, and Telnet/Web GUI support allows instant control and switching.

2. APPLICATIONS

- Broadcasting control room
- Surveillance control room
- Public advertisement displays
- HDMI input extending
- Video wall system

3. PACKAGE CONTENTS

- 1×4 by 1 HDMI Seamless Switcher
- 1× Remote Control (CR-124)
- 1×12V/3 A DC Power Adaptor
- 1×Operation Manual

4. SYSTEM REQUIREMENTS

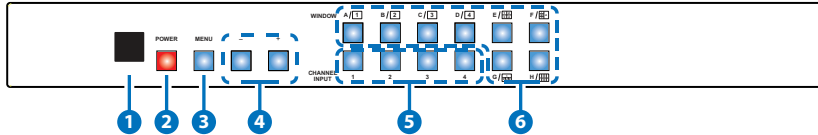
HDMI source devices such as DVD/Blu-ray players or PC/Laptop devices and output to HDTV/monitor or to an HDMI distribution system.

5. FEATURES

- Integrate 4 HDMI sources to a single display or video wall system
- Seamless switching between channels and windows
- Supports Picture-in-Picture (PIP), Picture-out-of-Picture (POP) and multi-window display
- 8 screen preset hot keys and 4 extra customizable screen setting favourites
- Supports individual channel size and position adjustments
- Zoom, shrink and overlay the source channels
- Supports Fade-In/Fade-Out, Chromakey, Mirror and Rotation (90° left or right and 180° upside down) functions
- Save and recall up to 4 customisable favorite screen arrangements
- Supports OSD menu, RS-232, Telnet/Web GUI, IR remote control and on-panel controls

6. OPERATION CONTROLS AND FUNCTIONS

6.1 Front Panel



- 1 IR WINDOW:** Accepts the IR signal from the supplied remote control.
- 2 POWER:** Press to turn the unit on or to put it into standby mode.
- 3 MENU:** Press this button to bring up the On-screen Display (OSD) menu on screen.
- 4 MINUS/PLUS (-/+):** Press these buttons to navigate down/up the OSD menu.
- 5 CHANNEL INPUT 1~4:** Press to cycle through the four HDMI sources to be displayed in the corresponding window. All windows can display the same input or each channel can display a different input.
- 6 WINDOW A~H:** Press these hot keys to select the required screen configuration. Windows A to D will display the selected channel in full screen. Windows E to H can simultaneously display a combination of channels on the same screen.

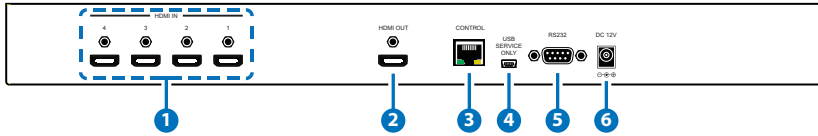
Windows A to D's source selection corresponds to channel inputs 1 to 4. To change the input channel for window A, press the button for channel input 1. You will not be able to select the buttons for channel inputs 2 to 4 when window A is selected. The sizes for Windows E to H are adjustable through the OSD menu settings.

Note: Only Window G is PIP (Picture-in-Picture) whereas E, F and H are POP (Picture-out-of-Picture) modes.

The order of priority when windows overlap each other is Channel 4 > Channel 3 > Channel 2 > Channel 1 i.e Channel 4 will cover Channel 3, Channel 3 will cover Channel 2 and so on.

Note: Under some circumstances the window borders may show some interference, adjusting the display's motion setting may resolve this issue.

6.2 Rear Panel



1 HDMI IN 1~4: Connect to up to four source HDMI equipped source devices such as DVD/Blu-ray players and/or PC/Laptop devices.
Note: When input 1 or 2 has no source connected a warning message will appear on the OSD.

2 HDMI OUT: Connect to an HDTV/monitor or HDMI matrix for display of the image.

3 CONTROL: Connect to an active network for Telnet or Web GUI control (Please refer to Sections 6.6, 6.7 and 6.8).

Warning: Please do not connect this port directly to the PC/Laptop as the Telnet function will not work.

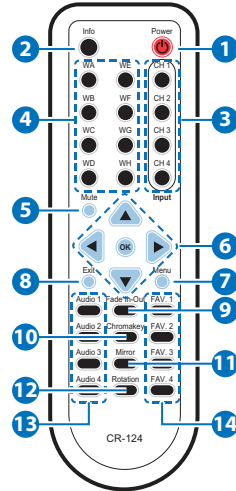
4 USB SERVICE ONLY: Manufacturer use only.

5 RS-232: Connect to a PC/Laptop or RS-232 control system to use RS-232 commands to control the unit (Please refer to Sections 6.5 and 6.6).

6 DC 12V: Connect the 12V DC power supply to the unit and plug the adaptor into an AC outlet.

6.3 Remote Control

- 1 **Power:** Press this button to switch the unit on or to set it to standby mode.
- 2 **Info:** Press this button to display the unit's firmware version.
- 3 **Input CH 1~CH 4:** Press these buttons to cycle through the HDMI sources (1 to 4) for each channel to be displayed on screen.
- 4 **WA~WH:** Press these hot keys to select the screen setting where WA to WD display the selected channel in full screen and WE to WH display different combinations of all 4 channels on the same screen.
- 5 **Mute:** Press this button to mute the audio from the HDMI output.
- 6 **▲/▼/◀/▶ and OK:** Press these buttons to navigate through the OSD menu and press OK to enter or confirm settings.
- 7 **Menu:** Press this button to enter into the OSD menu.
- 8 **Exit:** Press this button to exit the OSD menu or settings.
- 9 ***Fade-In-Out:** Press this button to switch on or off the Fade in/out function.
- 10 ***Chromakey:** Press this button to activate the Chroma key function where CH 1 is the background and CH 2 is the overlaid (top) image.
- 11 ***Mirror:** Press this button to display the screen in mirror image.
- 12 ***Rotation:** Press this button to rotate the image 90° left/right or 180° upside down.
- 13 **Audio 1~4:** Press these buttons to select the audio from HDMI input source 1 to 4.
- 14 **FAV. 1~4:** Press these buttons to bring up the previously stored customized screen settings.



Note: The functions with an asterisk () will only work when displaying Windows A to D. The system will revert to Window A if these functions are used when Windows E to H are displayed.*

6.4 OSD Menu

| MAIN MENU | 1ST LAYER | 2ND LAYER | 3RD LAYER |
|-----------|-------------------|--------------|-----------------|
| I/O Setup | Output Resolution | 480P | |
| | | 579P | |
| | | 720P50 | |
| | | 720P60 | |
| | | 1080P24 | |
| | | 1080P25 | |
| | | 1080P30 | |
| | | 1080P50 | |
| | | 1080P60 | |
| | | 1024×768 | |
| | | 1280×800 | |
| | | 1280×1024 | |
| | | 1366×768 | |
| | | 1440×900 | |
| 1600×900 | | | |
| 1600×1200 | | | |
| 1680×1050 | | | |
| 1920×1200 | | | |
| | NATIVE | | |
| | Menu Back | | |
| | OSD Settings | Info Display | On/ Off |
| | | H Offset | 0~20 (5) |
| | | V Offset | 0~20 (5) |
| | | Timeout | Off ~50 |
| | | Gain | 0~10 (2) |
| | | Menu Back | |
| Menu Exit | | | |

| MAIN MENU | 1ST LAYER | 2ND LAYER | 3RD LAYER | |
|---------------------|-------------------|-------------|-------------------|--|
| Image Adjust | Brightness Adjust | CH 1 | 0~100 (50) | |
| | | CH 2 | 0~100 (50) | |
| | | CH 3 | 0~100 (50) | |
| | | CH 4 | 0~100 (50) | |
| | | Value Reset | | |
| | | Menu Exit | | |
| | Contrast Adjust | CH 1 | 0~100 (50) | |
| | | CH 2 | 0~100 (50) | |
| | | CH 3 | 0~100 (50) | |
| | | CH 4 | 0~100 (50) | |
| | | Value Reset | | |
| | | Menu Exit | | |
| | Hue Adjust | CH 1 | 0~100 (50) | |
| | | CH 2 | 0~100 (50) | |
| | | CH 3 | 0~100 (50) | |
| | | CH 4 | 0~100 (50) | |
| | | Value Reset | | |
| | | Menu Exit | | |
| | Saturation | CH 1 | 0~100 (50) | |
| | | CH 2 | 0~100 (50) | |
| | | CH 3 | 0~100 (50) | |
| | | CH 4 | 0~100 (50) | |
| | | Value Reset | | |
| | | Menu Exit | | |
| | Picture Reset | | | |
| | Menu Exit | | | |

| MAIN MENU | 1ST LAYER | 2ND LAYER | 3RD LAYER |
|---------------------|---------------------|--------------|-----------------------------|
| Window Setup | Channel 1 Select | Size | CH1 Wxxx Hxxx |
| | | | Width Unit |
| | | | Width Ten |
| | | | Width Hundred |
| | | | Height Unit |
| | | | Height Ten |
| | | | Height Hundred |
| | | Position | CH1 Hxxx Vxxx |
| | | | Horizontal Unit |
| | | | Horizontal Ten |
| | | | Horizontal Hundred |
| | | | Vertical Unit |
| | | | Vertical Ten |
| | | | Vertical Hundred |
| | | Image Output | On/Off |
| | | Priority | CH1→4,CH2→3, CH3→2,CH4→1 |
| | | Window Reset | |
| | | Menu Exit | |

| MAIN MENU | 1ST LAYER | 2ND LAYER | 3RD LAYER |
|---------------------------------|---------------------|--------------|-----------------------------|
| Window Setup (Cont.) | Channel 2 Select | Size | CH2 Wxxx Hxxx |
| | | | Width Unit |
| | | | Width Ten |
| | | | Width Hundred |
| | | | Height Unit |
| | | | Height Ten |
| | | | Height Hundred |
| | | Position | CH2 Hxxx Vxxx |
| | | | Horizontal Unit |
| | | | Horizontal Ten |
| | | | Horizontal Hundred |
| | | | Vertical Unit |
| | | | Vertical Ten |
| | | | Vertical Hundred |
| | | Image Output | On/Off |
| | | Priority | CH1→4,CH2→3, CH3→2,CH4→1 |
| | | Window Reset | |
| | | Menu Exit | |

| MAIN MENU | 1ST LAYER | 2ND LAYER | 3RD LAYER |
|---------------------------------|---------------------|--------------|-----------------------------|
| Window Setup (Cont.) | Channel 3 Select | Size | CH3 Wxxx Hxxx |
| | | | Width Unit |
| | | | Width Ten |
| | | | Width Hundred |
| | | | Height Unit |
| | | | Height Ten |
| | | | Height Hundred |
| | | Position | CH3 Hxxx Vxxx |
| | | | Horizontal Unit |
| | | | Horizontal Ten |
| | | | Horizontal Hundred |
| | | | Vertical Unit |
| | | | Vertical Ten |
| | | | Vertical Hundred |
| | | Image Output | On/Off |
| | | Priority | CH1→4,CH2→3, CH3→2,CH4→1 |
| | | Window Reset | |
| | | Menu Exit | |

| MAIN MENU | 1ST LAYER | 2ND LAYER | 3RD LAYER |
|---------------------------------|---------------------|--------------|-----------------------------|
| Window Setup (Cont.) | Channel 4 Select | Size | CH4 Wxxx Hxxx |
| | | | Width Unit |
| | | | Width Ten |
| | | | Width Hundred |
| | | | Height Unit |
| | | | Height Ten |
| | | | Height Hundred |
| | | Position | CH4 Hxxx Vxxx |
| | | | Horizontal Unit |
| | | | Horizontal Ten |
| | | | Horizontal Hundred |
| | | | Vertical Unit |
| | | | Vertical Ten |
| | | | Vertical Hundred |
| | | Image Output | On/Off |
| | | Priority | CH1→4,CH2→3, CH3→2,CH4→1 |
| | | Window Reset | |
| | Menu Exit | | |
| | Label Select | VIDEO 1 | VIDEO 1/2/3/4 |
| | | VIDEO 2 | VIDEO 1/2/3/4 |
| | | VIDEO 3 | VIDEO 1/2/3/4 |
| | | VIDEO 4 | VIDEO 1/2/3/4 |
| | | Menu Exit | |

| MAIN MENU | 1ST LAYER | 2ND LAYER | 3RD LAYER | |
|---------------------------------|----------------------|----------------------|---|----------------|
| Window Setup (Cont.) | Favors Store | FAV 1 Store | On/ Off /OK | |
| | | FAV 2 Store | On/ Off /OK | |
| | | FAV 3 Store | On/ Off /OK | |
| | | FAV 4 Store | On/ Off /OK | |
| | | Menu Exit | | |
| | Menu Exit | | | |
| Window Convert | Channel 1 Convert | Mirror | On/ Off | |
| | | Fade In-Out | Off /1.0/1.1/1.2 Convert /1.3/1.4 /1.5/1.6/1.7/1.8/ 1.9/2.0/2.1/2.2/2 .3/2.4/2.5/2.6/2.7 /2.8/2.9/3.0 | |
| | | Rotation | R90/L90/Up-Side Down180/Off | |
| | | Window Reset | | |
| | | Menu Exit | | |
| | | Channel 2 Convert | Mirror | On/ Off |
| | Fade In-Out | | Off /1.0/1.1/1.2 Convert /1.3/1.4 /1.5/1.6/1.7/1.8/ 1.9/2.0/2.1/2.2/2 .3/2.4/2.5/2.6/2.7 /2.8/2.9/3.0 | |
| | Rotation | | R90/L90/Up-Side Down180/Off | |
| | Window Reset | | | |
| | Menu Exit | | | |

| MAIN MENU | 1ST LAYER | 2ND LAYER | 3RD LAYER |
|-------------------------------|-------------------|---------------------|---|
| Window Convert (Cont.) | Channel 3 Convert | Mirror | On/ Off |
| | | Fade In-Out | Off /1.0/1.1/1.2 Convert /1.3/1.4 /1.5/1.6/1.7/1.8/ 1.9/2.0/2.1/2.2/2.3/2.4/2.5/2.6/2.7 /2.8/2.9/3.0 |
| | | Rotation | R90/L90/Up-Side Down180/Off |
| | | Window Reset | |
| | | Menu Exit | |
| | Channel 4 Convert | Mirror | On/ Off |
| | | Fade In-Out | Off /1.0/1.1/1.2 Convert /1.3/1.4 /1.5/1.6/1.7/1.8/ 1.9/2.0/2.1/2.2/2.3/2.4/2.5/2.6/2.7 /2.8/2.9/3.0 |
| | | Rotation | R90/L90/Up-Side Down180/Off |
| | | Window Reset | |
| | | Menu Exit | |
| *ChromaKey Setup | Minimum For R | 000~255 (0) | |
| | Maximum For R | 000~255 (15) | |
| | Minimum For G | 000~255 (0) | |
| | Maximum For G | 000~255 (15) | |
| | Minimum For B | 000~255 (0) | |
| | Maximum For B | 000~255 (15) | |
| | Switch | ON/ OFF | |
| | Exit | | |

| MAIN MENU | 1ST LAYER | 2ND LAYER | 3RD LAYER |
|-----------------------|----------------|------------------------|-----------|
| Ethernet Setup | IP Mode | Static/DHCP | |
| | Static Set | IP/Mask/Gate | |
| | Byte1 High | XXX 192 255 192 | 000~255 |
| | Byte2 | XXX 168 255 168 | 000~255 |
| | Byte3 | XXX 5 255 5 | 000~255 |
| | Byte4 Low | XXX 159 0 254 | 000~255 |
| | Re-Link | No /Yes | |
| | Exit | | |
| Information | Static/DHCP IP | LINKED/NOT LINKED | |
| | IP | IP/Mask/Gate | |
| | Mask | XXX.XXX.XXX.XXX | |
| | Gate | XXX.XXX.XXX.XXX | |
| | Mac | XXX.XXX.XXX.XXX | |
| | Sink HDMI /DVI | | |
| | Model xxxxxxx | | |
| | Native xxxxxxx | | |
| | F/V version | | |
| Menu Exit | | | |

Note:

1. Chromakey Setup only works when CH 1 and CH 2 are selected. CH 1 is the background and CH 2 is the top layer to be overlaid.
2. The Chromakey function is designed for overlapping two video images (such as news reports, weather forecasts or educational videos). The background color of CH 2 is usually a single, solid, color which can be easily removed. The RGB setting is for the CH2 video where the minimum setting figures cannot be greater than the maximum figures and the maximum figures cannot be lower than the minimum setting figures.
3. Figures in BOLD are default settings.

6.5 RS-232 Protocols

| HDMI SWITCHER | | | REMOTE CONTROL (PC) | |
|---------------|------------|---|---------------------|------------|
| Pin | Definition | | Pin | Definition |
| 1 | NC | | 1 | NC |
| 2 | Tx | | 2 | Rx |
| 3 | Rx | | 3 | Tx |
| 4 | NC | ▶ | 4 | NC |
| 5 | GND | ◀ | 5 | GND |
| 6 | NC | | 6 | NC |
| 7 | NC | | 7 | NC |
| 8 | NC | | 8 | NC |
| 9 | NC | | 9 | NC |

Baud Rate: 115200bps

Data Bit: 8 bits

Parity: None

Flow Control: None

Stop Bit: 1

6.6 RS-232 and Telnet Commands

| COMMAND A | DESCRIPTION |
|-------------------|--|
| RESO 0~18 | Set output resolution: 0=480p 1=576p 2=720p@50Hz 3=720p@60Hz 4=1080p@24Hz 5=1080p@25Hz 6=1080p@30Hz 7=1080p@50Hz 8=1080p@60Hz 9=1024×768@60Hz 10=1280×800@60Hz 11=1280×1024@60Hz 12=1366×768@60Hz 13=1440×900@60Hz 14=1600×900@60Hz 15=1600×1200@60Hz 16=1680×1050@60Hz 17=1920×1200@60Hz 18=NATIVE |
| OSDDIS 0/1 | Enable/disable onscreen display: 0=Off, 1=On. |

| COMMAND A | DESCRIPTION |
|------------------------|---|
| OSDH 0~20 | OSD H offset 0~20. |
| OSDV 0~20 | OSD V offset 0~20. |
| OSDTIME 0~50 | OSD timeout 0~50. |
| OSDGAIN 0~10 | OSD gain value 0~10. |
| BRI 0~4 0~100 | Set brightness value for channel: 0=All, 1~4=Channel, 0~100=Value. |
| CON 0~4 0~100 | Set contrast value for channel port: 0=All, 1~4=Channel, 0~100=Value. |
| SAT 0~4 0~100 | Set saturation value for channel port: 0=All, 1~4=Channel, 0~100=Value. |
| HUE 0~4 0~100 | Set hue value for channel port: 00=All, 1~4=Channel, 0~100=Value. |
| HSIZE 1~4 0~X | Set image horizontal size: 1~4=Channel, 0~X=Horizontal pixel for current resolution. |
| VSIZE 1~4 0~X | Set image vertical size: 1~4=Channel, 0~X=Vertical pixel for current resolution. |
| HPOS 1~4 0~X | Set horizontal position of specified channel: 1~4=Channel, 0~X=Horizontal pixel for current resolution. |
| VPOS 1~4 0~X** | Set vertical position of specified channel: 1~4=Channel, 0~X=Vertical pixel for current resolution. |
| IMAGE 1~4 0~1 | Channel(s) output on/off: 1~4=Channel, 0=Off, 1=On. |
| PRI 1~4 1~4 | Set channel priority: 1~4=Channel, 1~4=Priority. |
| LABEL 1~4 XXX** | Assign a video name: 1~4=Video, XXX=A~H. |
| STORE 1~4 | Save the current window state to FAV.: 1~4=FAV. |

| COMMAND A | DESCRIPTION |
|-------------------------------------|---|
| RECALL 1~12 | <p>Recall a window state:</p> <p>1=WINDOW A 7=WINDOW G 2=WINDOW B 8=WINDOW H 3=WINDOW C 9=WINDOW FAV. 1 4=WINDOW D 10=WINDOW FAV. 2 5=WINDOW E 11=WINDOW FAV. 3 6=WINDOW F 12=WINDOW FAV. 4</p> |
| MIRROR 0/1* | Enable/disable mirror effect: 0=Off, 1=On. |
| FADE 0~21 | <p>Enable/disable fade effects:</p> <p>0=OFF 5=1.5s 11=2.1s 16=2.6s 1=1.0s 6=1.6s 12=2.2s 17=2.7s 2=1.1s 7=1.7s 13=2.3s 18=2.8s 3=1.2s 8=1.8s 14=2.4s 19=2.9s 4=1.3s 9=1.9s 15=2.5s 20=3.0s 5=1.4s 10=2.0s</p> |
| ROTATE 0~3 | <p>Set video rotation video to preset positions: 0=Rotate off, 1=R90, 2=L90, 3=180</p> |
| CHRC R/G/B MIN/MAX 0~15* | <p>Set the RGB color range for the chroma key: R/ G/B= Color channel, MIN/MAX= Color value, 0~15= Set present value 0~255.</p> <p>RGB MAX: RGB MIN:</p> <p>0=15 8=143 0=00 8=128 1=31 9=159 1=16 9=144 2=47 10=175 2=32 10=160 3=63 11=191 3=48 11=176 4=79 12=207 4=64 12=192 5=95 13=223 5=80 13=208 6=111 14=239 6=96 14=224 7=127 15=255 7=112 15=240</p> |
| CHRSW 0/1 | Set the chroma key on/off: 0=Off, 1=On. |
| IPMODE 0/1 | Set IP mode to dhcp or static: 0=DHCP, 1=Static. |
| IPADD XXX.XXX. XXX.XXX | Set IP address: XXX=0~255. |
| MAADD XXX. XXX.XXX.XXX | Set Subnet address: XXX=0~255. |

| COMMAND A | DESCRIPTION |
|-----------------------------------|--|
| GAADD XXX. XXX.XXX.XXX | Set Gateway address: XXX=0~255. |
| ETHTIME 0~6 | Ethernet timeout: 0=Off, 1=10 Minute, 2=20 Minute, 3=30 Minute, 4=40 Minute, 5=50 Minute, 6=60 Minute. |
| RELINK | Relink the unit in 2 seconds. |
| DEFAULT | Reset the unit to factory defaults. |
| VICH 1~4 0~4 | Video channel command: 1~4=Video, 0=All channel outputs, 1~4=Channel outputs. |
| MUTE 0/1 | Mute audio on/off: 0=Off, 1=On. |
| POW 0/1 | Power the unit on/off: 0=Off, 1=On. |
| AUDIO 1~4 | Change output audio to specified source: 1~4=Audio source. |
| IMRE B/C/S/H | Reset the image to factory defaults: B=Brightness, C=Contrast, S=Saturation, H=Hue. |
| PIRE | Reset the unit picture settings to factory defaults. |
| CHRE 0~4** | Reset the windows settings to factory defaults: 0=All channel outputs, 1~4=Channel outputs. |
| WICORE* | Reset the window convert to factory defaults. |
| RIPM | Show current IP mode. |
| IPCONFIG | Show IP configuration. |
| HELP | Print all available RS-232/Telnet commands to the screen. |
| ? | Print all available RS-232/Telnet commands to the screen. |

Note: Commands with one asterisk (*) will function under Windows A to D. Commands with two asterisks (**) will function under Windows E to H and FAV. 1 to 4.

| COMMAND B | DESCRIPTION |
|-----------------|------------------------|
| WND001 | Change to window A |
| WND002 | Change to window B |
| WND003 | Change to window C |
| WND004 | Change to window D |
| WND005 | Change to window E |
| WND006 | Change to window F |
| WND007 | Change to window G |
| WND008 | Change to window H |
| CH1001 | Change CH1 to source 1 |
| CH1002 | Change CH1 to source 2 |
| CH1003 | Change CH1 to source 3 |
| CH1004 | Change CH1 to source 4 |
| CH2001 | Change CH2 to source 1 |
| CH2002 | Change CH2 to source 2 |
| CH2003 | Change CH2 to source 3 |
| CH2004 | Change CH2 to source 4 |
| CH3001 | Change CH3 to source 1 |
| CH3002 | Change CH3 to source 2 |
| CH3003 | Change CH3 to source 3 |
| CH3004 | Change CH3 to source 4 |
| CH4001 | Change CH4 to source 1 |
| CH4002 | Change CH4 to source 2 |
| CH4003 | Change CH4 to source 3 |
| CH4004 | Change CH4 to source 4 |
| IO1000** | CH1 image off |
| IO1001** | CH1 image on |
| IO2000** | CH2 image off |
| IO2001** | CH2 image on |
| IO3000 | CH3 image off |
| IO3001 | CH3 image on |

| COMMAND B | DESCRIPTION |
|-----------------|---------------------------------|
| IO4000 | CH4 image off |
| IO4001 | CH4 image on |
| MUT000 | Mute off |
| MUT001 | Mute on |
| AUD001 | Change output audio to source 1 |
| AUD002 | Change output audio to source 2 |
| AUD003 | Change output audio to source 3 |
| AUD004 | Change output audio to source 4 |
| FAD000* | Fade in-out off |
| FAD001* | Fade in-out on |
| CHR000* | Chromakey function off |
| CHR001* | Chromakey function on |
| MIR000* | Mirror function off |
| MIR001* | Mirror function on |
| ROT000* | Rotation function off |
| ROT001* | Rotation function right |
| ROT002* | Rotation function left |
| ROT003* | Rotation function up-side down |
| SFA001** | Store window format to FAV. 1 |
| SFA002** | Store window format to FAV. 2 |
| SFA003** | Store window format to FAV. 3 |
| SFA004** | Store window format to FAV. 4 |
| RFA001** | Recall window from FAV. 1 |
| RFA002** | Recall window from FAV. 2 |
| RFA003** | Recall window from FAV. 3 |
| RFA004** | Recall window from FAV. 4 |
| POW000 | Power off |
| POW001 | Power on |

Note: Commands with one asterisk () will function under Windows A to D. Commands with two asterisks (**) will function under Windows E to H and FAV. 1 to 4.*

6.7 Telnet Control

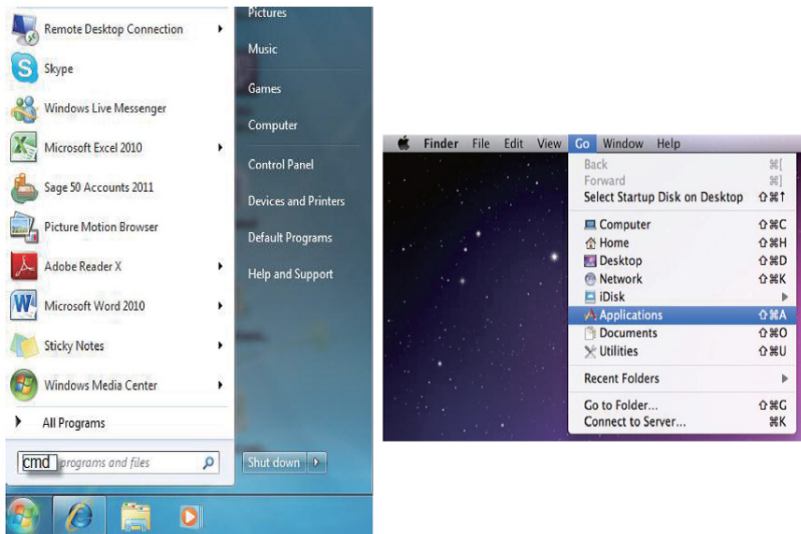
Before attempting to use the telnet control, please ensure that both the Scaler (via the 'CONTROL' port) and the PC/Laptop are connected to the active networks.

To access the telnet control in Windows 7, click on the 'Start' menu and type "cmd" in the Search field then press enter.

Under Windows XP go to the 'Start' menu and click on 'Run', type "cmd" with then press enter.

Under Mac OS X, go to Go→Applications→Utilities→Terminal.

See below for reference.



Once in the command line interface (CLI) type "TELNET", then the IP address of the unit and hit enter.

Note: The IP address of the unit can be found under 'Ethernet Setup' on the unit's OSD menu.

```
Microsoft Windows [Version 6.1.7600]
Copyright (c) 2009 Microsoft Corporation. All rights reserved.

C:\Users\CYP>telnet 192.168.5.80 23_
```

This will bring us into the unit which we wish to control. Type "?" to lists all the available commands.

```

RESO
OSDDIS
OSDH
OSBU
OSDTIME
OSDGAIN
BRI
CON
SAT
RUE
HSIZE
USIZE
HPOS
UPOS
IMAGE
PRI
LABEL
STORE
RECALL
MIRROR
FADE
ROTATE
CHRC
CHRW
IPMODE
IPADD
MAADD
GAADD
ETHIME
RELINK
DEFAULT
UICH
MUTE
POW
AUDIO
IMRE
PIRE
CIRE
MICORE
RIPM
IPCONFIG
HELP
?

```

Type "IPCONFIG" to show all IP configurations. To reset the IP, type "IPMODE" to set static IP/DHCP (see Section 6.6 for details).

Note:

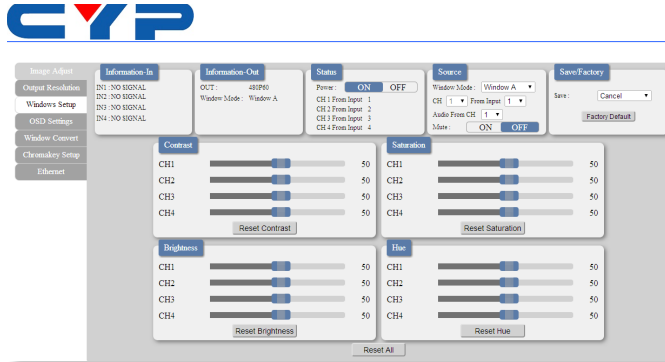
1. *Commands will be not executed unless followed with a carriage return. Commands are not case-sensitive.*
2. *If the IP is changed then the IP Address required for Telnet access will also need to be changed accordingly. A power cycle is also required for every IP change.*



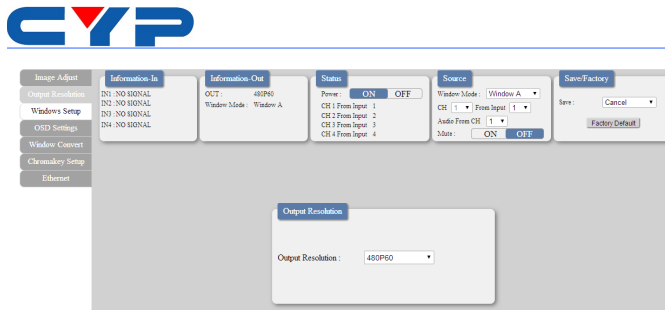
6.8 Web GUI Control

On a PC/Laptop that is connected to the same active network as the Scaler, open a web browser and type the unit's IP address on the web address entry bar. The browser will display the unit's Image Adjust, Output Resolution, etc.

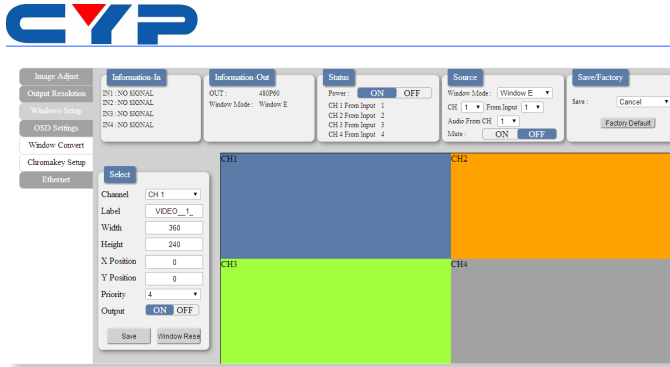
Click on the 'Image Adjust' tab to set the values of Contrast, Brightness, Saturation and Hue.



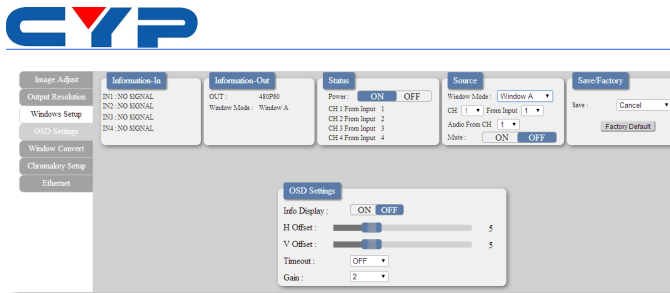
Click on the 'Output Resolution' tab to set the output display resolution.



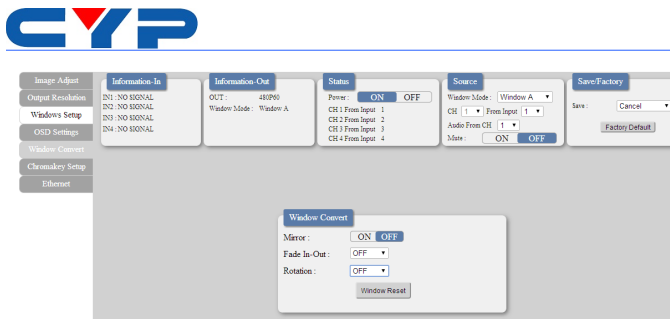
Click on the 'Windows Setup' tab to set the output display format. This function is only available under window E~H.



Click on the 'OSD Settings' tab to set the OSD function and position.

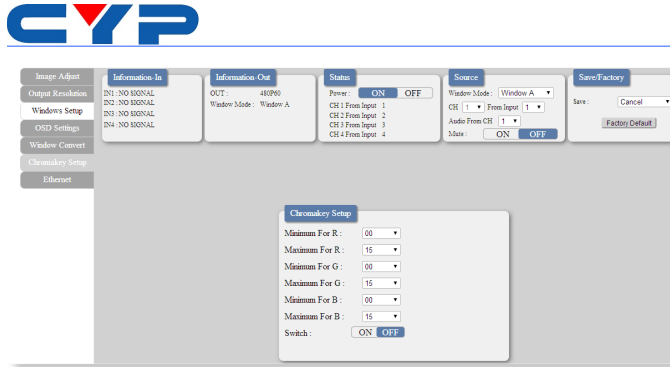


Click on the 'Window Convert' tab to set the output display angle. This function is only available under window A~D.

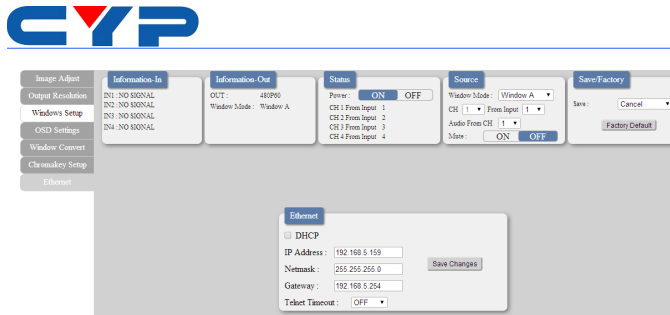




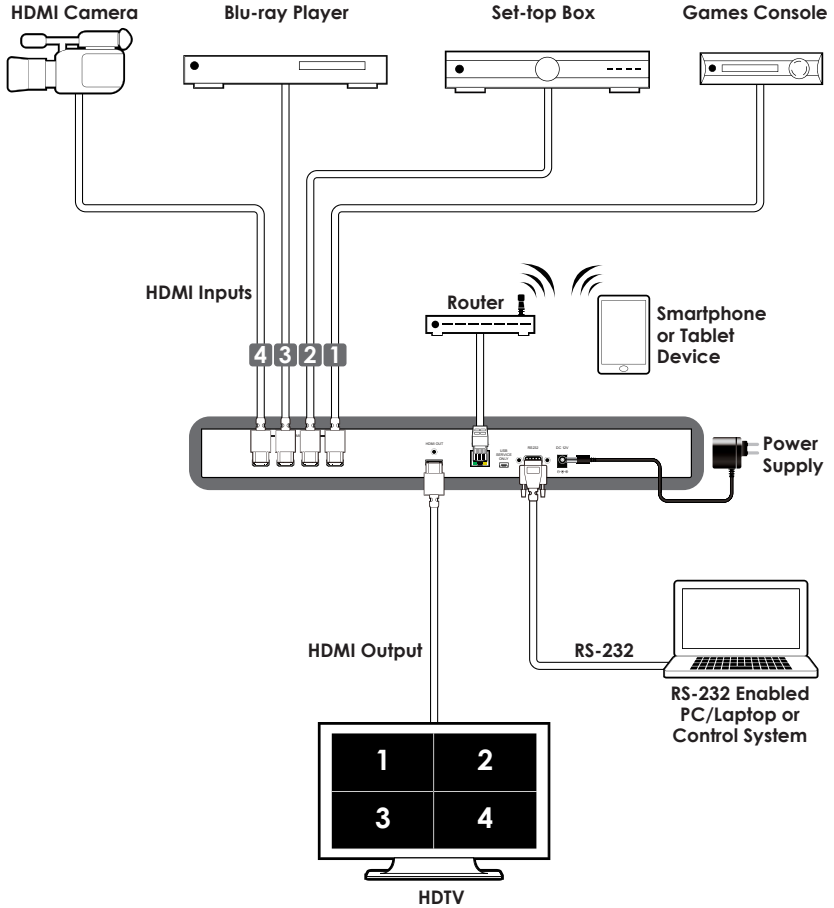
Click on the 'ChromaKey Setup' tab to set the output display color. This function is only available under window E~H.



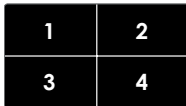
Click on the 'Ethernet' tab to reset the IP configuration. The system will ask for a reboot of the unit when any of these settings are changed. The IP address needed to access the Web GUI control will also need to be changed accordingly on the web address entry bar.



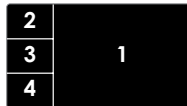
7. CONNECTION DIAGRAM



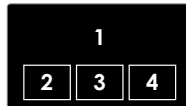
Screen Configurations:



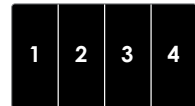
Window E
(POP)



Window F
(POP)



Window G
(PIP)



Window H
(POP)



8. SPECIFICATIONS

8.1 Technical Specification

| | |
|-------------------------------------|---|
| Video Bandwidth | 225MHz/6.75 Gbps |
| Input Ports | 4×HDMI |
| Output Port | 1×HDMI |
| Supported Input Resolutions | PC:VGA~WUXGA, HD: 480i~1080p |
| Supported Output Resolutions | 1080p@60 |
| HDMI Input Cable Distance | Up to 15m@1080p/12-bit |
| HDMI Output Cable Distance | Up to 15m@1080p/8-bit |
| Supports Sampling Rate | 32~192 kHz |
| ESD Protection | Human body model: ±8kV (air-gap discharge) ±4kV (contact-gap discharge) |
| Power Supply | 12V/3A DC (US/EU standards, CE/FCC/UL certified) |
| Dimensions | 436mm(W) × 247mm(D) × 44mm(H) |
| Weight | 2200 g |
| Chassis Material | Aluminum |
| Silkscreen Color | Black |
| Operating Temperature | 0 °C ~ 40 °C / 32 °F ~ 104 °F |
| Storage Temperature | -20 °C ~ 60 °C / -4 °F ~ 140 °F |
| Relative Humidity | 20 ~ 90 % RH (non-condensing) |
| Power Consumption | 18 W |

8.2 Supported Resolution

| HDMI RESOLUTION | INPUT | OUTPUT |
|------------------------|-------|--------------|
| 640×480@60/72/75/85 | ✓ | - |
| 800×600@56/60/72/75/85 | ✓ | - |
| 1024×768@60/70/75/85 | ✓ | 1024×768@60 |
| 1360×768@60 | ✓ | - |
| 1280×768@60/75 | ✓ | - |
| 1280×800@60 | - | ✓ |
| 1280×1024@60/75 | ✓ | 1280×1024@60 |
| 1366×768@60 | ✓ | ✓ |
| 1440×900@60 | - | ✓ |
| 1600×900@60 | - | ✓ |
| 1600×1200@60 | ✓ | ✓ |
| 1680×1050@60 | - | ✓ |
| 1920×1200@60 | ✓ | ✓ |
| 480i@60 | ✓ | - |
| 576i@50 | ✓ | - |
| 480p@60 | ✓ | ✓ |
| 576p@50 | ✓ | ✓ |
| 720p@50 | ✓ | ✓ |
| 720p@60 | ✓ | ✓ |
| 1080i@50 | ✓ | - |
| 1080i@60 | ✓ | - |
| 1080p@24 | ✓ | ✓ |
| 1080p@25 | - | ✓ |
| 1080p@30 | - | ✓ |
| 1080p@50 | ✓ | ✓ |
| 1080p@60 | ✓ | ✓ |

9. ACRONYMS

| ACRONYM | COMPLETE TERM |
|-------------|---|
| CEC | Consumer Electronics Control |
| DVI | Digital Visual Interface |
| HDCP | High-bandwidth Digital Content Protection |
| HDMI | High Definition Multimedia Interface |
| PIP | Picture-in-Picture |
| POP | Picture out of picture |
| IR | Infrared |



CYPRESS TECHNOLOGY CO., LTD

Home page: <http://www.cypress.com.tw>