

# WAM-402 True Diversity Digital Wireless Automatic Mixer

## Simple Operation Manual

Before using the product, please read the simple operation manual and keep it in good condition.



More Products Please Scan QR Code to follow Us Official Website

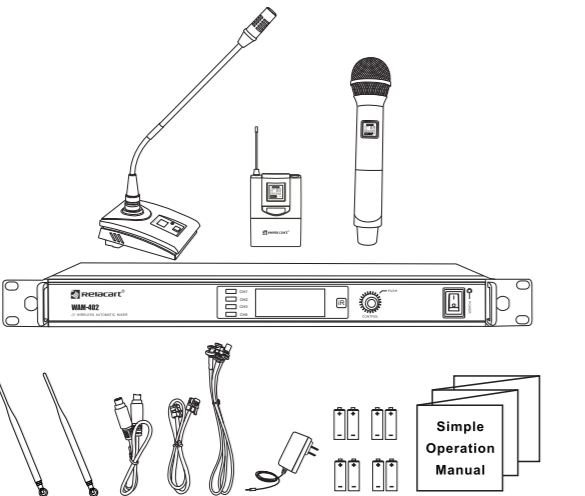


Use WeChat Scan QR Code to Follow us on WeChat

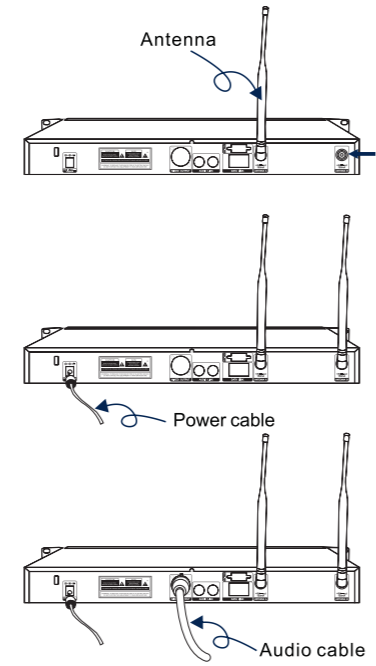
www.relacart.com

### Packing List

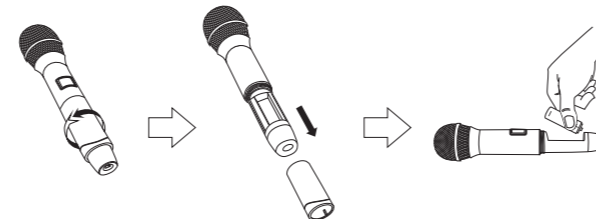
- ◆ Receiver \*1
- ◆ Transmitter \* 4
- ◆ BNC Antenna \*2
- ◆ S Terminal line \* 2
- ◆ 60cm coaxial-cable \* 2
- ◆ 1.5V AA battery \*8
- ◆ External power adapter \* 1
- ◆ Simple operation manual \* 1
- ◆ RJ-11 Telephone wire \* 1



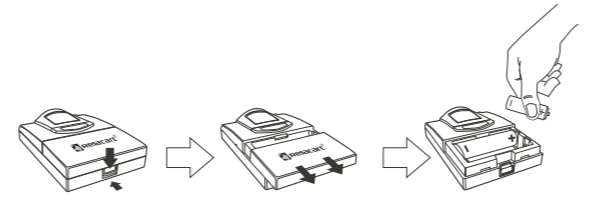
### Device Installation



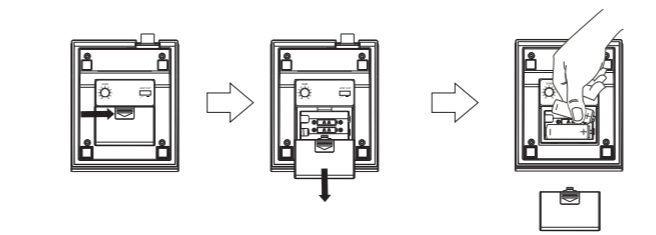
### Handheld microphone's installation of battery



### Backpack's installation of battery

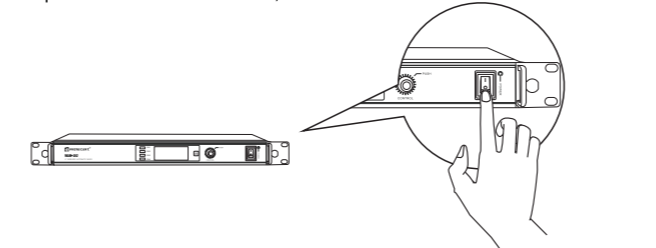


### The stand's installation of battery

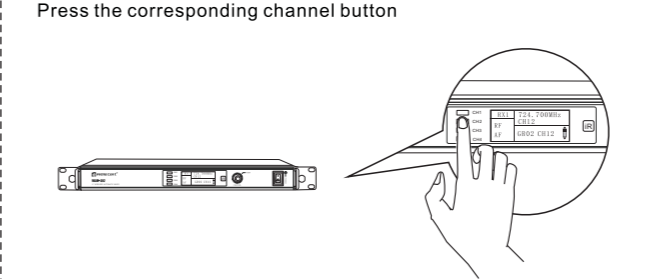


### Simple operation step

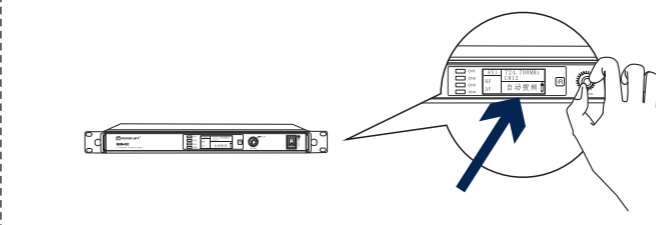
Turn on the receiver by pressing the power button (" " symbol), the display and power indicator are all on;



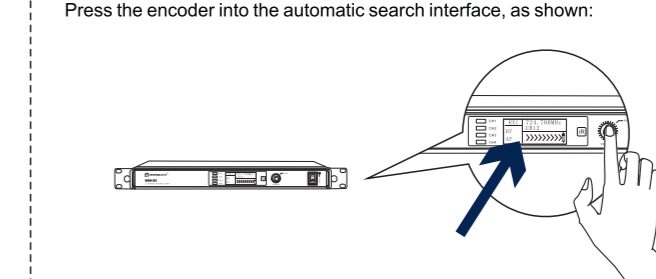
### Handheld microphone's installation of battery



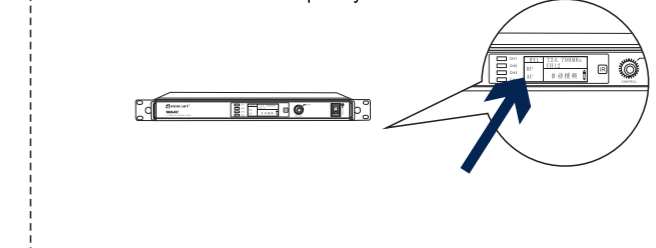
If there is any interference with the channel, turn the encoder clockwise to "Auto Search" interface. (If there is no interference, skip directly "Automatic frequency search" operation, to "a key on the frequency" on the use of frequency)



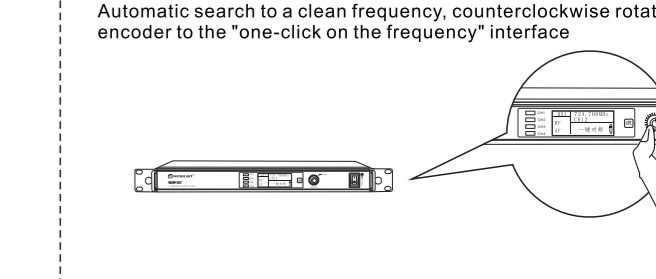
### The stand's installation of battery



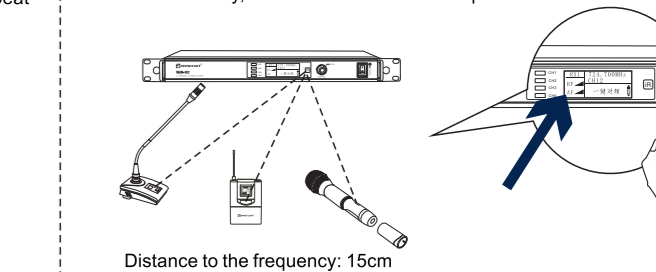
The searched channel will automatically calculate the clean and undisturbed frequency. The RF display on the receiver's display will be 0, if not, repeat this action until a clean frequency is found



### Automatic search to a clean frequency, counterclockwise rotation of the encoder to the "one-click on the frequency" interface

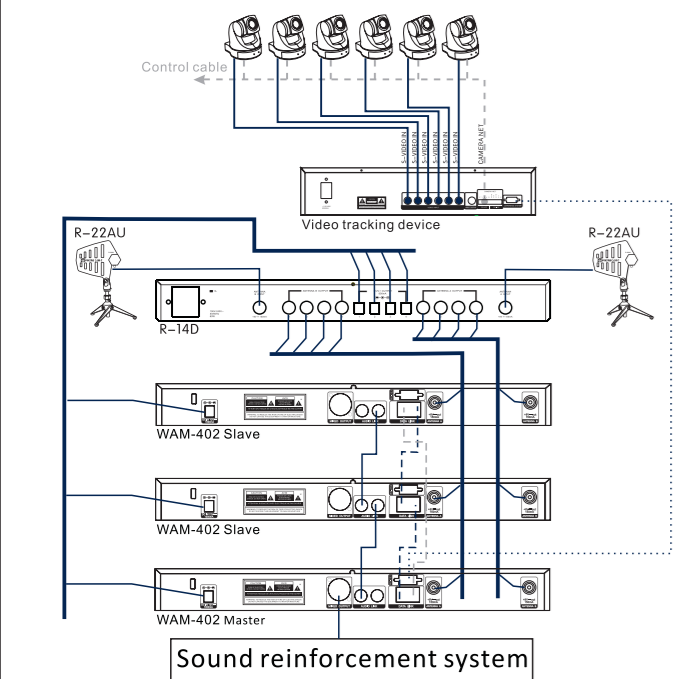


Align the transmitter infrared frequency window with the receiver IR infrared frequency window, press the encoder to determine the frequency, When the RF signal is on, the microphone of the corresponding channel can be used to speak. When the microphone speaks, the receiver AF signal hops. Move, said that can be used normally, other channels the same operation. As shown:

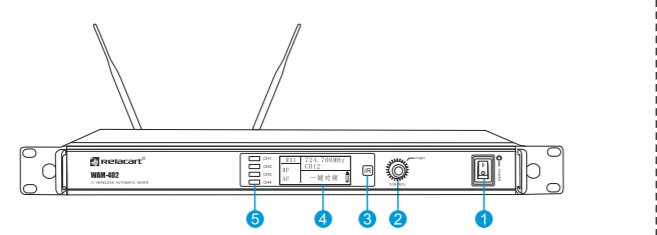


Distance to the frequency: 15cm

## Receiver system connection diagram

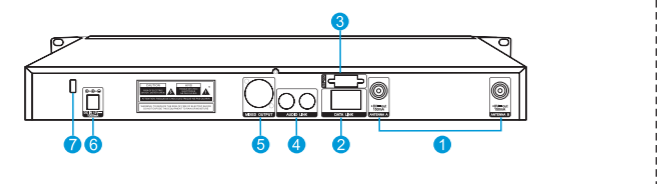


## Receiver front panel features introduced



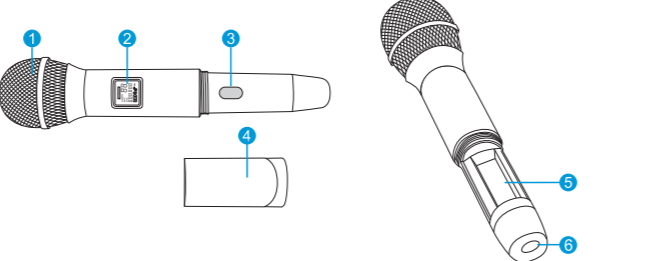
- 1 Ship-type power switch: dial up ("I" symbol) Turn on the power switch, dial down ("O" symbol) Turn off the power
- 2 Function knob (encoder): Select menu clockwise / counterclockwise, press to set system operation menu, long press to enter main menu
- 3 Infrared (iR) window: Used to send infrared signals to the transmitter for synchronization
- 4 LCD Display: Display settings and parameters
- 5 Channel button: press this button to enter or exit the channel menu

## Receiver rear panel features introduced



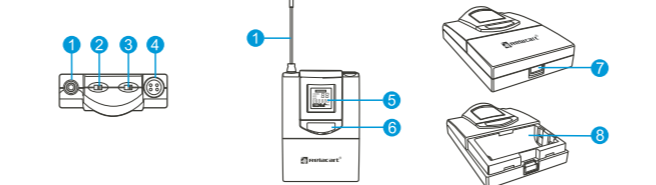
- 1 RF Antenna BNC Input Connector: Suitable for the connection of Antenna A and Antenna B, and supports DC 8V/150mA power output
- 2 Serial Data Link Port (DATA LINK): When multiple WAM-402 receivers are working, RELACART provide dedicated data cable, multiple machines can exchange data
- 3 RS-232 interface: Connect automatic video tracking system VTS-1000 or the control system
- 4 Serial Audio In and Out Port (AUDIO LINK): When multiple WAM-402 receivers are used, RELACART provide dedicated S-terminal cable and multiple audio connections
- 5 Balanced audio output jack: XLR socket, all channel audio can be output here
- 6 DC IN jack: Connect the external power adapter
- 7 Pull-up device: Used to fix the connecting cable of the external power adapter

## Handheld features introduced



- 1 Microphone pickup: used to pick up the desired audio and sent it to the transmitter modulation
- 2 LCD display: display frequency, frequency channel, the current battery power and other information
- 3 Infrared (iR) window: During infrared synchronization, align the receiver's infrared port to allow the transmitter to synchronize with the receiver
- 4 Battery cover: When installing, changing the battery or setting the infrared frequency, the battery cover must be opened
- 5 Battery holder: 2 AA batteries (note battery positive and negative)
- 6 Power switch: Turn the power on or off, and compatible with mute function

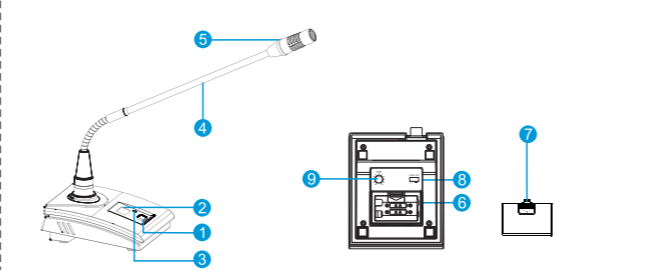
## Back features introduced



- 1 Transmitting antenna: used to transmit a palletized radio carrier
- 2 Toggle switch: Turn the power on or off
- 3 LAV/INS Audio Input Selection Switch: The transmitter can be connected to an audio input (microphone or instrument cable) to the top input jack, LAV for microphone input, and INS to the guitar and other musical instrument equipment are using an instrument cable.
- 4 TA4M / LEMO Input Socket: Connects to a microphone or instrument cable
- 5 LCD display: display frequency, frequency channel, the current battery power and other information

- 6 Infrared (iR) window: During infrared synchronization, align the receiver's infrared port to allow the transmitter to synchronize with the receiver
- 7 Battery cover lock switch: Open this switch to open the battery cover
- 8 Battery cover: fill 2 AA batteries

## Gooseneck base features introduced



- 1 Power switch: press to turn the power on, press and hold for 3 seconds to turn off the power;
- 2 LCD screen: display the working frequency, battery power and other information;
- 3 Infrared (IR) window: In the infrared synchronization process, the receiver's infrared port alignment allows the transmitter to achieve synchronization with the receiver;
- 4 Microphone rod: bending gooseneck design, can flexibly put the pickup head to any position;
- 5 Speaking Aperture: When you open the microphone to speak, this instruction light bright;
- 6 Battery Holder: Fill 2 AA batteries;

- 7 Battery cover lock switch: Open this switch to open the battery cover;
- 8 Low cut switch: cut off the low-frequency signal below 150Hz;
- 9 Gain knob: adjust the input signal size.

## Receiver and transmitter features introduced

- Master volume: adjust the total volume of the host
- Speakers: The number of speakers can be forced to set up to four microphones at the same time
- Priority: Up to 2 microphones can be set for priority speech
- Sound level: set the microphone sound to open the level
- Working status: set the master/ slave
- Pilot Settings: When the pilot is on, data information on the transmitter can be detected
- Language Selection: Chinese, English
- Display Contrast: Set the display contrast
- Keyboard Lock: You can lock the receiver to prevent accidental or unauthorized changes
- Restore factory settings: restore the factory settings of the parameters
- Exit settings: exit the system menu settings

- WAM-402 Individual channel setting
  - GR01 CH01: Set the frequency group or channel
  - A key to the frequency: the infrared window will be launched at the receiver infrared window alignment
  - Automatic frequency search: the system automatically search for clean frequency
  - SQ Setting: Adjust the channel receiving sensitivity
  - Volume Adjustment: adjust the individual channel volume

- UH-1
  - MIC: The microphone is in a talking state
  - MUTE: Press the POWER switch to mute the transmitter
- ET-60
  - POWER: Turn the switch to the right, turn on the power, turn the switch to the left and turn off the power
  - LAV / INS: Microphone input and linear input switch
- UD-1
  - MIC: The microphone is in a talking state
  - POWER: Press and hold for two seconds to turn off the power

## Safety operation and Notice

1. Please read instructions for safety operation carefully before installation and operation. Please save your safety operation guide for future reference.
2. Do not scratch, bend, twist, stretch or heat the power cord as this may cause damage to the power cord, resulting in a fire or electric shock.
3. Do not open the device shell, otherwise it may cause electric shock. If you need to repair, maintain or repair, please contact your local agent.
4. Do not touch the power plug with wet hands as this may cause a fire or electric shock.
5. Do not attempt to modify this device. Failure to do so may result in personal injury or product malfunction.
6. Do not use this equipment near water.
7. If the power cord is damaged (such as a broken wire or bare core), obtain

8. To move the device he power, unplug the power cord, and unplug all connecting cables as this may damage the cable, resulting in a fire or electric shock.
9. Before cleaning the device, unplug the power cord and unplug all connecting cables. Please clean it with a dry soft cloth.

10. If the device is not in use for a long time, turn off the power, it is best to unplug the socket
11. With the power plug and appliance coupler as the disconnecting device, it should be kept easy to operate.
12. For the safe use of the equipment and adequate ventilation, the minimum clearance around the equipment should be maintained at a distance of 5 cm or more.
13. DO NOT cover the Ventilation holes, such as: newspaper / fabric / curtains and other items.
14. Equipment should not be placed on a bare flame source, such as: lit candles.
15. Battery should not be exposed to sunshine, roasted or other high temperature overheating environment.
16. Do not throw the waste battery, please put in the designated bins.
17. Water protection rating: IPX0
18. The device can be used normally in tropical / temperate climates.
19. This product is only suitable for safe use at the altitude of 2000m and below.
20. This symbol " " indicates that dangerous voltage constituting a risk of electric shock is present within this unit.
21. All Relacart products will be afforded one year free maintenance except for man-made damage, such as:
  - the device is damaged by man-made factors.
  - the device is damaged by improper operation.
  - some components are damaged or loss after the self-disassembly.